

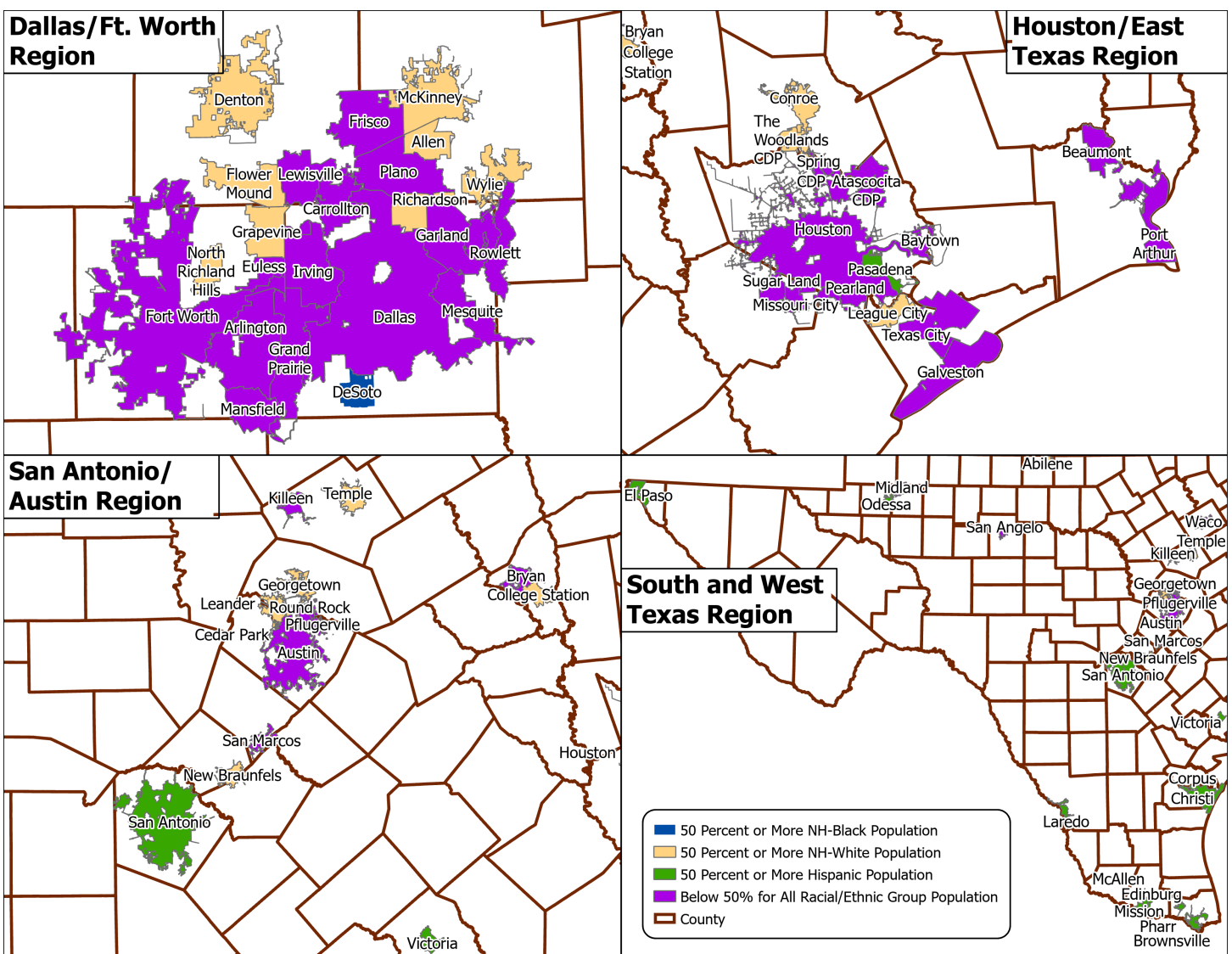
Texas Places, 2010-2020

Ethnic and Racial Diversity Continues to Grow

The Texas population grew from 25 million in 2010 to 29 million in 2020. Most of that growth has occurred around Texas' major cities. The 71 places with a population of 50,000 or higher in 2020 contributed to 49% of the increase of the state's total population.

According to the U.S. Census Bureau, the overall racial and ethnic diversity of the country has increased since 2010 and Texas is no different. In 2010, Texas was already a state without a majority race/ethnic group, when the non-Hispanic White population dropped below 50% of the total population. In 2020, the share of Hispanics, NH Blacks, NH Asians and NH Other groups continues to increase statewide and the same is occurring in more Texas places. For example, the percent of places that had each ethnic/racial group comprise less than 50% of the total population has increased. In other words, fewer places in Texas have one ethnic/racial group making up a majority of the population, thus highlighting the rich and growing diversity across the state.

Racial/Ethnic Composition in Texas Places with 50,000+ People, Selected Texas Regions, 2020



Number and Percent of Places with Each Racial/Ethnic Group Accounting for Less than 50% of Total Population, 2010-2020

Year	2010	2020
All Places*	1,743	1,851
with each racial/ethnic group accounting for < 50% of the population	129	217
Percent of places with each racial/ethnic group accounting for < 50% of the population	7.4%	11.7%
Places with < 5,000 People	1,358	1,440
with each racial/ethnic group accounting for < 50% of the population	50	85
Percent of places with each racial/ethnic group accounting for < 50% of the population	3.7%	5.9%
Places with 5,000 - 49,999 People	324	340
with each racial/ethnic group accounting for < 50% of the population	56	95
Percent of places with each racial/ethnic group accounting for < 50% of the population	17.3%	27.9%
Places with 50,000+ People	61	71
with each racial/ethnic group accounting for < 50% of the population	23	37
Percent of places with each racial/ethnic group accounting for < 50% of the population	37.7%	52.1%

* This analysis includes Incorporated Places and CDPs. The U.S. Census Bureau defines a place as a legally bounded entity such as a city, town or village. Census Designated Places (CDPs) are unincorporated communities or concentrations of population that are not within an incorporated place and are used for statistical purposes only.